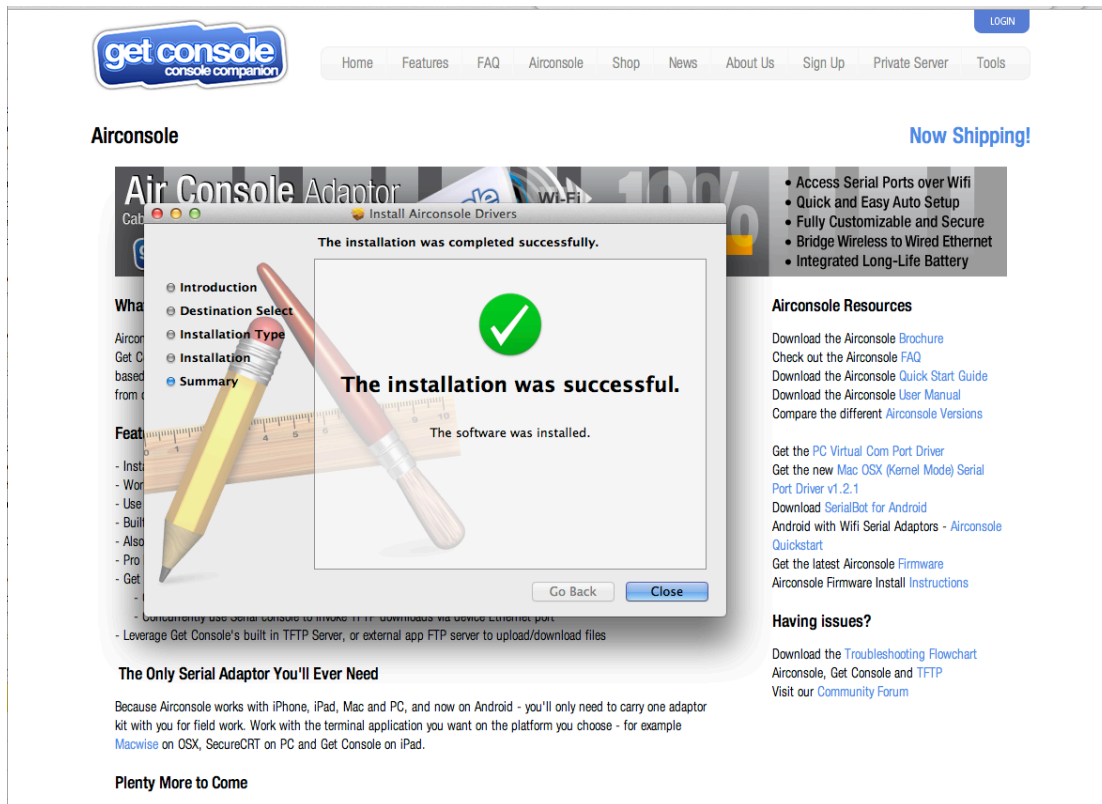
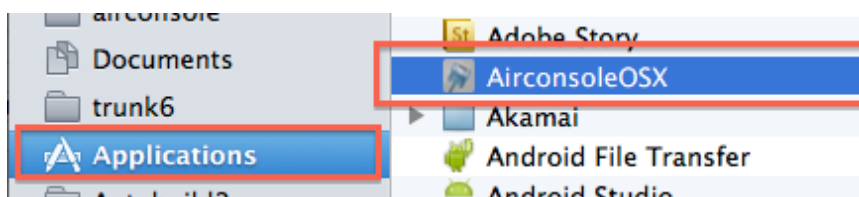
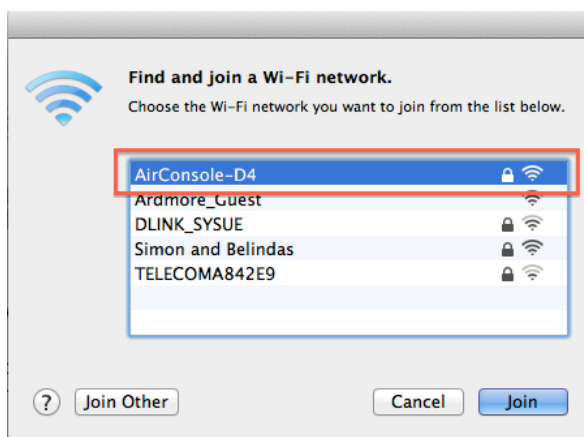


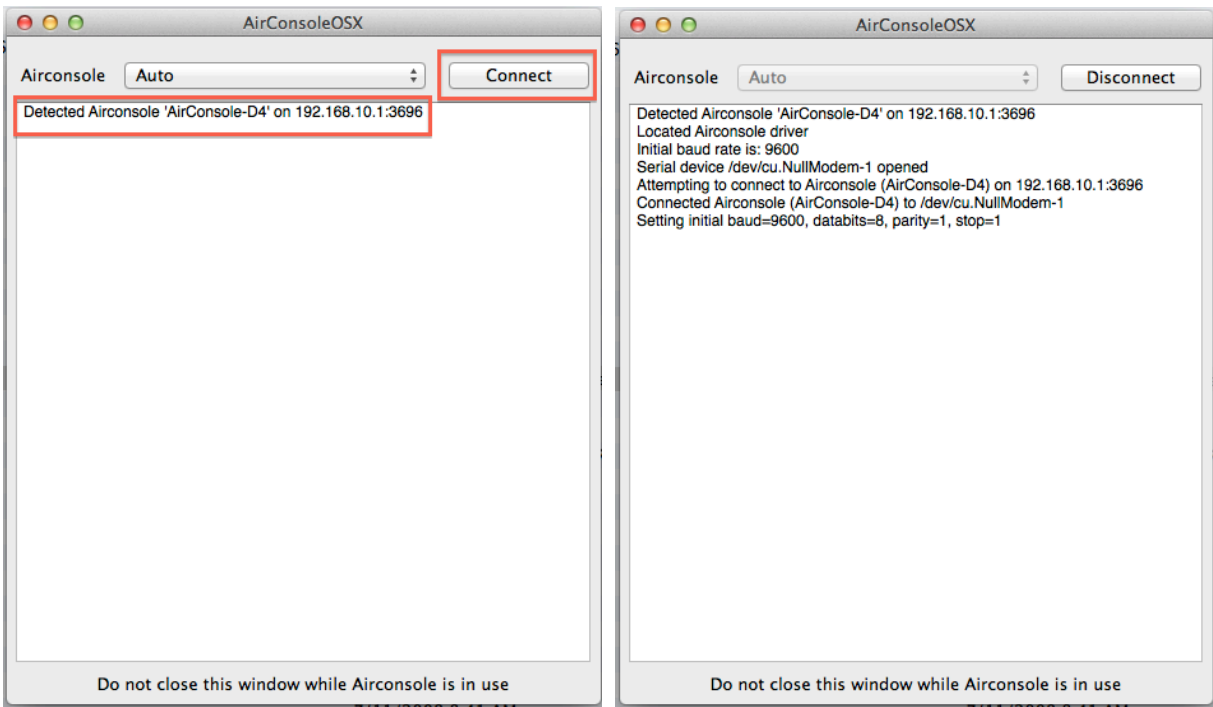
Using Airconsole with OSX – Macwise or “Screen” (Terminal.app)

- 1) Download OSX latest driver package from www.get-console.com/airconsole. For this document the version 1.2.1 is the latest.

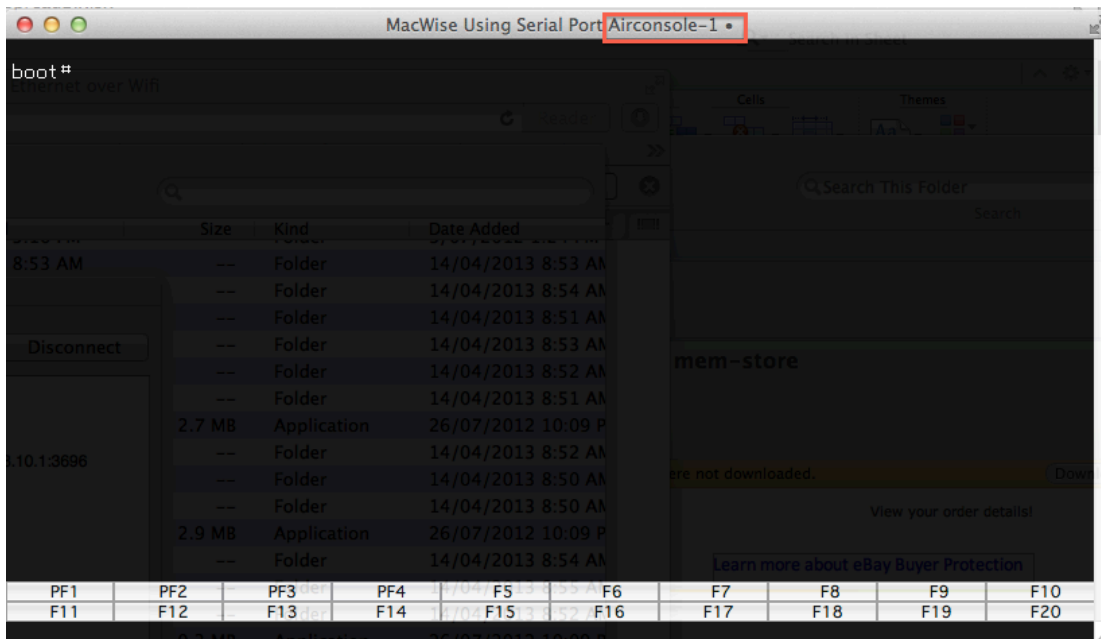


- 2) Install driver, connect to Airconsole WIFI network and launch AirconsoleOSX from Applications directory. Note that AirconsoleOSX.app needs to be **running** to use Airconsole serial port on OSX





3) For Macwise – Select the “Airconsole-1” COM port



4) For use with the built in Terminal.app in OSX, use the “Screen” command. By Default the Airconsole COM port is installed as /dev/tty.Airconsole-1. To launch connection use command “screen /dev/tty.Airconsole-1 [baud rate]”

```

simon-hopes-macbook-pro-2:dev simon$ pwd
/dev
simon-hopes-macbook-pro-2:dev simon$ ls -al | grep Airconsole
crw-rw-rw-  1 root  wheel   18, 13  3 Aug 20:33 cu.Airconsole-1
crw-rw-rw-  1 root  wheel   18, 12  3 Aug 20:28 tty.Airconsole-1
simon-hopes-macbook-pro-2:dev simon$ screen /dev/tty.Airconsole-1 9600

```



```
boot# show
TinyROM version 1.2(1)
Fri May 14 16:55:31 1999
Copyright (c) 1998-1999 by cisco Systems, Inc.
All rights reserved.
```

```
serial-no: JAD03261877
Type:      C805
DRAM:      8MB
Flash:     4MB
```

```
set baud           =9600
set data-bits      =8
set parity         =none
set stop-bits     =1
set console-flags =0
set mac-address   =00D0.0602.1F8B
set unit-ip       =0.0.0.0
set serv-ip       =0.0.0.0
set netmask       =0.0.0.0
set gate-ip       =0.0.0.0
set pkt-timeout   =4
set tftp-timeout  =16
set boot-action   =flash
set file-name     =""
set watchdog      =off
set prompt        ="boot"
set ios-conf      =0x2102
boot# █
```